

Name:

Date:

Owl Pellets!

Owls are **carnivorous raptors** that feed on small mammals, other birds, reptiles, amphibians, and insects. Because owls are birds and birds don't have teeth, they have to swallow their prey whole! An owl's strong stomach acids digest everything but the **bones, fur, and feathers** of its prey. The indigestible stuff is regurgitated in a ball called an **owl pellet**.

That's right - you're playing with **owl vomit!**

Don't worry: these barf balls have been sanitized and are completely safe to handle, and the owls that made them aren't sick.

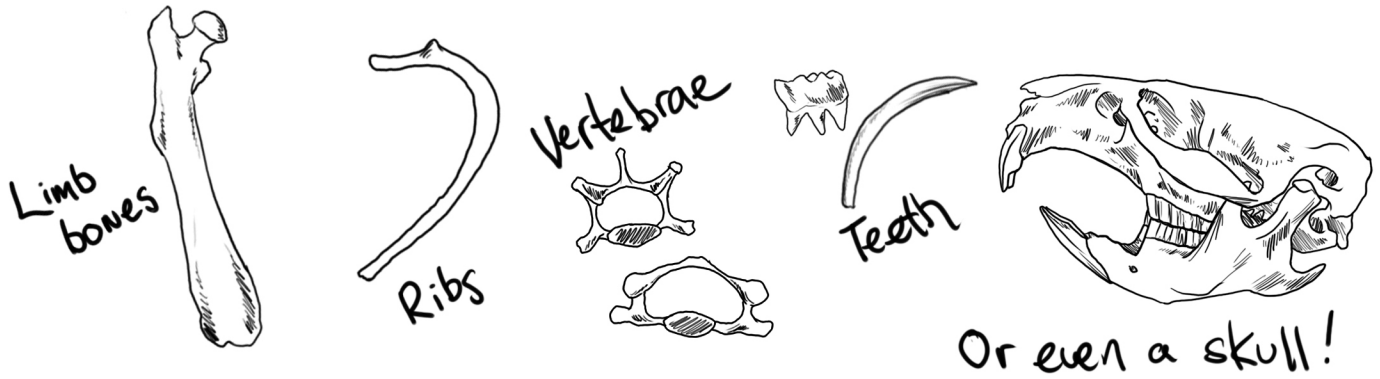
It's perfectly natural for them!

What's Inside? ↴



Look closely at your pellet. Is it covered in **fur** or **feathers**? Do you see any **bones** sticking out? Describe what you see.

Use your hands and the tools provided to carefully pull apart your pellet. Separate the small bones from the fur. You may find:



What bones did you find?

Draw and label them in the space below.

Hoo's Lunch?

Now that you've dissected your pellet, you can determine what - or **who** - the owl ate by examining the bones you found. Use the **bone key** provided to match your finds to the illustrated specimens.

Did you find teeth from a **rodent**? A **shrew skull**? Identify and list your finds below!